



	Fresh Water	Pool Water	Sea Water	220-240 V	400 V	110-120 V	50 Hz	60 Hz	12 V AC	24 V DC	DMX	DMX/RDM	Plug and Spray
Fog/Mist System	✓*	✓	✓	✓	✓	✓	✓	✓	✓	✓	✓	✓	✓

*Tapwater

FOG/MIST SYSTEM

These new Fog/Mist System produce a new, fascinating water effect. These fine droplets can be illuminated very well in the dark, thus creating a new dynamic water effect.

There are two different types of nozzles -mist nozzles and fog nozzles. Mist nozzles operate at a pressure of about 3 bar, and fog nozzles operate at about 80 bar.

*Due to possible contamination in fresh water tap water is used for the application of high-pressure fog nozzles. With a high-pressure nozzle the droplets are finer (the higher the pressure, the finer the water droplets).

Fog nozzles enhance lighting effects: a light matrix, for example, appears more voluminous, more majestic and dynamic. Mist nozzles create a spacial effect.

NEW


Fog/Mist System

Product characteristics at a glance

- Fog/Mist System project-oriented with LED lights
- Fog/Mist System is project-oriented with a chamber
- Individual solutions available on request

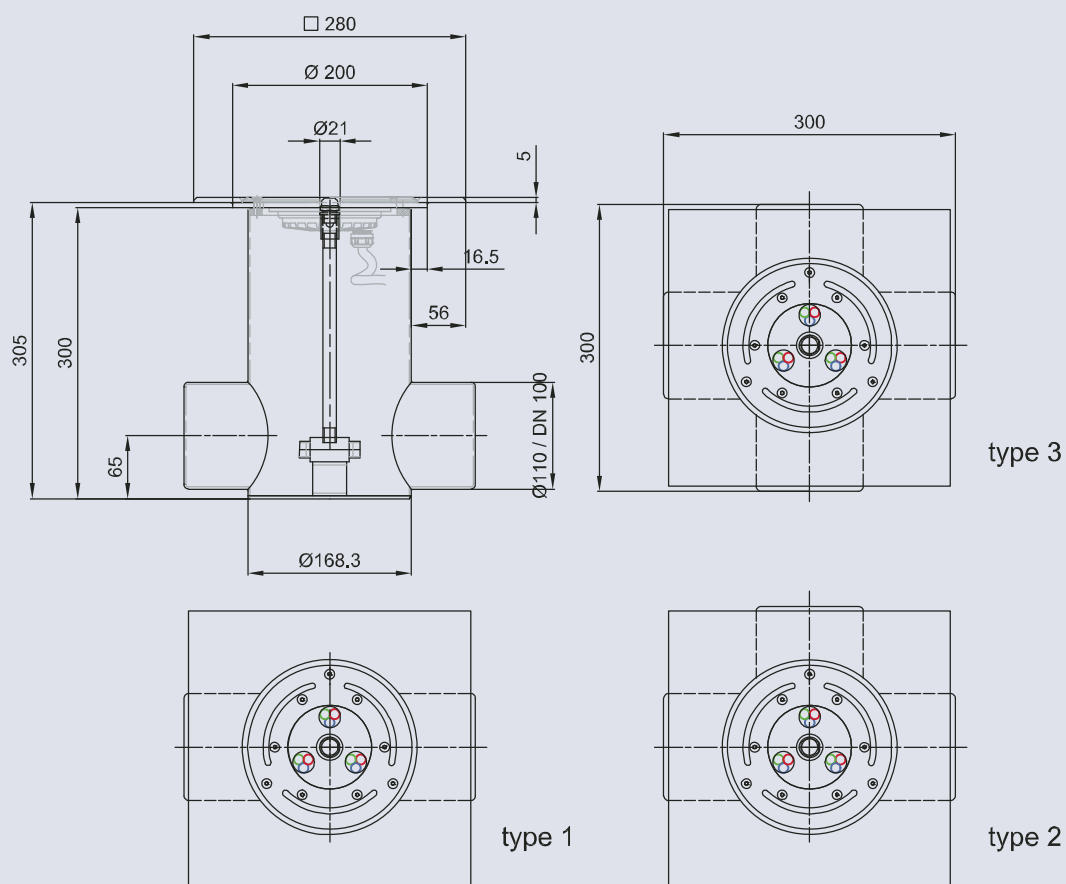
An example of chamber with a mist nozzle:

- With DA110/ DN 100 connection (as per request 2, 3 or 4 pcs)
- High-quality, robust stainless steel construction
- Graphics shows special coverplate



NOZZLES

CONTROLLABLE



Fog/Mist System

Graphics shows special coverplate

Fog/Mist System

Dimensions (L x W x H)	[mm]	300 x 300 x 305
Material		Stainless steel 1.4301 (AISI 304)
Weight	[kg]	7.5
Order no.		58909